

# PENTHOUSE 1301

SUMMIT  
BY OLSON KUNDIG



Artist conceptual renderings are subject to change.





## THE FINAL AND MOST LUXURIOUS PHASE AT ASCENT

Considered Arizona's most prestigious address, the new gated residential community, Ascent at The Phoenician®, is the gateway to iconic Camelback Mountain. It is conveniently situated adjacent to The Phoenician®, one of Arizona's premier luxury resort destinations. The Phoenician® recently completed an extensive renovation. The revitalized golf course, plus reinvented dining, fitness, pool, and tennis facilities offer a new experience of modern luxury.





## INTRODUCING SUMMIT BY OLSON KUNDIG

Replay Destinations, a leading developer of premier destination resort and residential communities, has engaged Olson Kundig to design the final phase at Ascent at The Phoenician®. The Summit by Olson Kundig development represents the crown of this private gated community adjacent to the Phoenician® Resort.





Artist conceptual renderings are subject to change.

## DESIGNED TO ECHO THE DESERT LANDSCAPE

Emerging from the base of iconic Camelback Mountain, elements of the landscape weave into the site and the homes. Architecture and interior design are integrated — the vision of one firm — for impeccably detailed residences. Materials reflect the unique qualities of the desert environment, emphasizing enduring beauty and connection to place. Local stone anchors the structure to its Camelback Mountain setting, while refined metal screens respond to the shifting desert light, creating an ever-evolving architectural expression.

Summit by Olson Kundig reaches the pinnacle of its aesthetic vision with Penthouse 1301, where the philosophy of architect Kirsten Ring Murray, principal and owner of Olson Kundig, becomes tangible. This penthouse pays homage to desert light, Camelback Mountain, and indoor-outdoor living.

The expansive, top-floor residence encompasses more than 6,200 square feet of combined indoor/outdoor space that fosters connections with the ever-changing sky and remarkable landscape.





Artist conceptual renderings are subject to change.

## A NEW BENCHMARK FOR LUXURY LIVING

The Summit Residences set a new standard for refined living on Camelback Mountain, crafted from natural materials deliberately chosen as a response to the mountain's grandeur. The most notable penthouse within an exclusive collection, Penthouse 1301 features a custom designed bulthaup kitchen, fireplaces indoors and out, and other details culminating in a level of luxury unsurpassed in Arizona. With breathtaking views and unparalleled attention to detail, this residence offers a degree of sophistication rarely seen.





Artist conceptual renderings are subject to change.

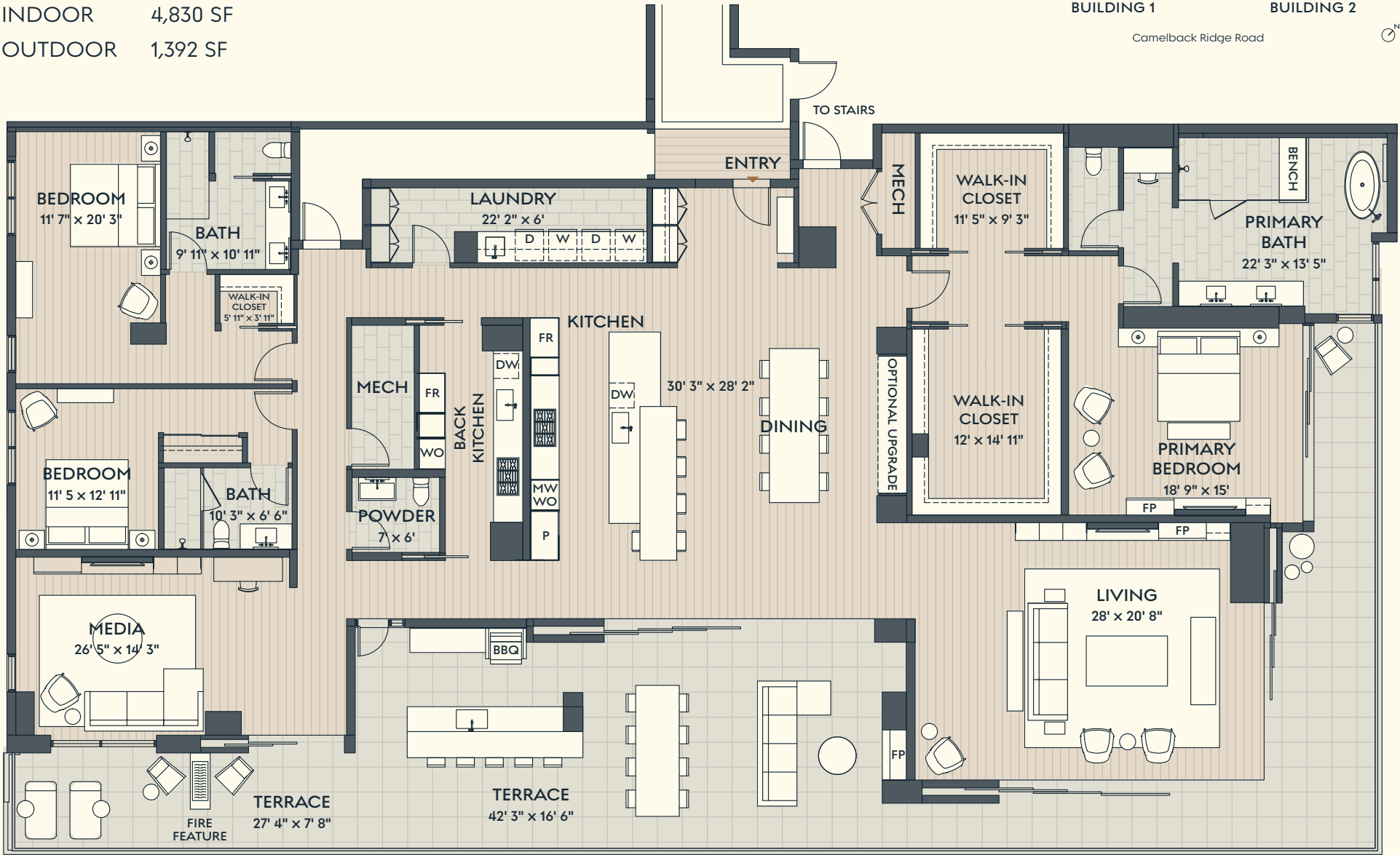
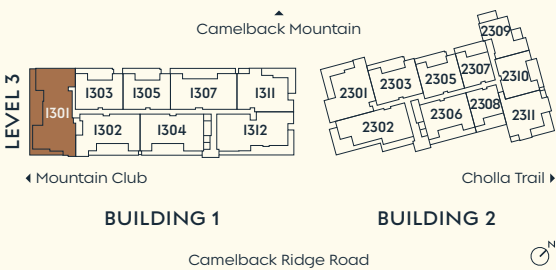
## SEAMLESS INDOOR AND OUTDOOR LIVING

Penthouse 1301 commands 4,800 square feet of interior space opening to a 1,400 square foot terrace that wraps around two sides of this top-floor residence, for an unrivaled experience of elegant desert living. With three bedrooms, a spacious multi-media room, and three and a half baths, the penthouse boasts expansive floor-to-ceiling glass walls that fully pocket and retract, leaving unimpeded views of Camelback Mountain, the Papago Buttes, and the surrounding Valley.

PENTHOUSE 1301 | PLAN M

3 BEDROOM + DEN  
3.5 BATH

INDOOR 4,830 SF  
OUTDOOR 1,392 SF



Dimensions, sizes, specifications, layouts and materials are approximate only and subject to change without notice. Depictions of furniture and other personal property are for illustration purposes only and will not be included with any home. Please ask a sales representative for details. Copyright © 2025.

Note: This plan has been turned 90° for viewing.





Artist conceptual renderings are subject to change.

## FORM AND FUNCTION IN PERFECT BALANCE

Penthouse 1301 features a refined chef's kitchen designed in collaboration between bulthaup and Olson Kundig, complemented by a signature back kitchen and an outdoor kitchen with wet bar. The sleek bulthaup cabinetry combines elegant form with ergonomic function. A stunning wine wall, available as a customizable feature, adds a dramatic centerpiece to the home. Premium details such as hardwood flooring, natural stone, Waterworks fixtures, Tom Kundig Collection hardware, and Sub-Zero/Wolf appliances are thoughtfully integrated to create the ultimate condominium residence.





Artist conceptual renderings are subject to change.

## THE ART OF THE HOME

A dramatic sliding glass corner opens the living room to panoramic views, extending interior space to the outdoors. Hardwood flooring throughout creates a natural aesthetic of rich, warm grains. The primary suite is a spacious sanctuary that opens to the terrace and includes two large walk-in closets plus an ensuite with a freestanding tub and a glass-enclosed steam shower with tiled bench. Four separate opportunities for fire features including those in the primary bedroom, living room and on the expansive terrace, elevate the ambiance throughout.



In kitchen and bathrooms, Waterworks fixtures add elements of sculpture.



Artist conceptual renderings are subject to change.



# FEATURES AND FINISHES

## ARCHITECTURE

- Materials reflect the unique qualities of the desert environment, emphasizing enduring beauty and connection to place
- Local stone anchors both buildings to their Camelback Mountain setting, while metal screens respond to the ever-evolving desert light
- Deep cantilevered rooflines create shade for outdoor spaces

## INTERIOR

- Interiors flow to expansive terraces connecting to the landscape and views
- Design integrates natural materials and contemporary lines, with options to personalize and upgrade
- Floor-to-ceiling sliding glass doors for seamless indoor/outdoor flow
- Ceilings up to 10' in living areas and bedrooms, with 9' ceilings in other spaces
- Feature wall with **Olson Kundig** metal fireplace and natural oak wood millwork (shelving expansion available as an option upgrade)
- Oak wood flooring throughout the living, kitchen, and bedroom areas
- Roller blinds are automated in living area and pre-wired for automation in bedrooms
- Recessed entry door with oil-rubbed bronze and wood panels and custom **Tom Kundig Collection** door handle
- Terraces feature large-scale porcelain pavers and wood soffits, built-in barbecues and custom fire tables

## KITCHEN

- **Olson Kundig-bulthaup** design collaboration is anchored by a large kitchen island and wood bar-top seating area
- State-of-the-art **Sub-Zero** and **Wolf Contemporary Series** appliances, with gas cooktop, wall ovens in black finish, and Cove dishwasher
- Integrated bulthaup sink design, floor to ceiling wood cabinetry, and quartz countertops
- **Waterworks Bond Collection** kitchen faucet with integrated pull-spray

## PRIMARY BATHROOM

- Natural stone honors Camelback Mountain
- Large format warm gray natural limestone floor tile
- Large format, natural veincut stone wall tiles: dark and light options
- Vanities with marble slab countertop, undermount sink, illuminated full height mirrors
- Freestanding solid white tub and freestanding floor-mount tub filler with adjacent stone shelf
- Sleek, modern sculptural fixtures from Waterworks Bond collection with custom flat dark nickel PVD finish
- **TOTO** dual flush toilet with optional upgrade for washlet
- Shower is frameless, enclosed with full-height glass. Integrated stone bench and recessed linear drain



## AMENITIES

- Private gate and guardhouse at the entrance to Ascent
- The adjacent **Mountain Club** has a private pool, fitness rooms, great room, games room, and catering kitchen
- Intimate residential lobbies include exterior materials such as weathered steel, wood panels and a 10-foot wood paneled pivot door featuring a custom **Tom Kundig Collection** door handle
- Crowning the Summit Residences' twin buildings are a pair of private rooftop terraces, ideal for watching sunsets
- Access to Camelback Mountain's Cholla Trail
- Public amenities of the adjacent **Phoenician® Resort**, including numerous culinary experiences and the new **Phoenician® Golf Course**



# SUMMIT

BY OLSON KUNDIG

[SummitOlsonKundig.com](http://SummitOlsonKundig.com)



Russ  
Lyon

Sotheby's  
INTERNATIONAL REALTY

Offered by Russ Lyon Sotheby's International Realty (AZ DRE # LC646682009). The residential project described herein (the "Residential Project") and the residential units within the Residential Project (the "Residential Units") are not owned, developed, or sold by Host Camelback I LLC or its affiliates, and Host Camelback I LLC does not make any representations, warranties or guaranties whatsoever with respect to the Residential Units, the Residential Project or any part thereof. PHCN LandCo LLC uses the Phoenician® brand name and certain Phoenician® trademarks (collectively, the "Trademarks") in connection with the sales and marketing of the Residential Units in the Residential Project under a limited, non-exclusive license from Host Camelback I LLC. The foregoing license may be terminated or may expire without renewal, in which case neither the Residential Units nor the Residential Project will be identified as a Phoenician® branded project or have any rights to use the Trademarks. All renderings contained herein are merely intended for illustration purposes and not as a representation, warranty or guaranty of size, layout, finishes, views, or any other characteristics of the improvements or natural features depicted. Developer reserves the right to make any modifications, additions or withdrawals to any and all descriptions or depictions or any other materials pertaining to the Project, without prior notice. THE IMPROVEMENTS DESCRIBED OR DEPICTED HEREIN (INCLUDING, WITHOUT LIMITATION, ENTRY FEATURES, LANDSCAPING IMPROVEMENTS, AMENITIES, BUILDINGS, HARDSCAPE, FENCING OR WALLS OR THE LACK THEREOF), ARE PROPOSED ONLY AND NO WARRANTY IS GIVEN OR IMPLIED THAT THE IMPROVEMENTS WILL BE COMMENCED OR COMPLETED. ORAL REPRESENTATIONS CANNOT BE RELIED UPON AS CORRECTLY STATING AND SHALL NOT BE DEEMED TO BE REPRESENTATIONS OR WARRANTIES OF THE DEVELOPER. FOR CORRECT REPRESENTATIONS, MAKE REFERENCE TO THE DOCUMENTS THAT ARE REQUIRED BY ARIZONA REVISED STATUTES, 32-2181, et seq., TO BE FURNISHED BY A DEVELOPER TO A BUYER OR LESSEE. This is not an offer of real estate for sale or solicitation of an offer to buy, to residents of any state, province or other jurisdiction where the Project is not registered in accordance with applicable law or where such offering or solicitation would otherwise be prohibited by law. Void where prohibited. No sales will occur until permitted by the Arizona Department of Real Estate. All sales are conditioned upon the issuance by the Arizona Department of Real Estate and buyers' receipt and acceptance of a Disclosure Report for the Project (or applicable portions thereof). Developer is committed to the letter and spirit of the policy for the achievement of equal housing opportunity. 